



# Wayne County Pre-K Registration Survey

**2015**

**Results**

**Prepared by:**  
**Rob Lillis**  
**Evalumetrics Research**  
**58 Scotland Road**  
**Canandaigua, New York 14424**  
**585-394-5811**  
[rlillis@rochester.rr.com](mailto:rlillis@rochester.rr.com)  
[www.evalumetrics.org](http://www.evalumetrics.org)

## Background

Parents voluntarily completed a brief survey at the time they registered their child for Kindergarten. The survey was developed with input from Kindergarten teachers, school counselors and school administrators. A focus group of parents gave critical feedback on question wording and structure.

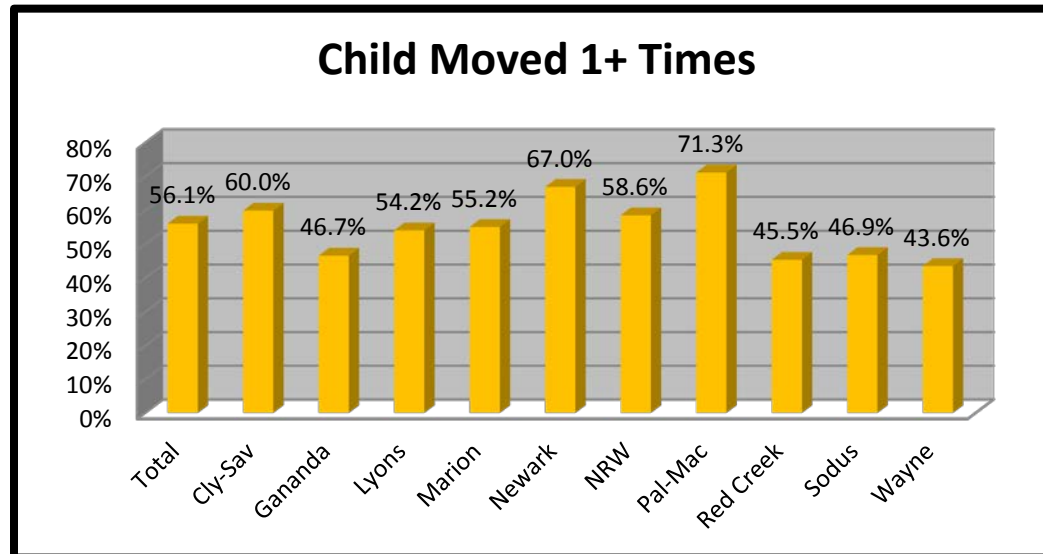
This report provides results for 599 parent surveys. In the 10 schools that participated, a total of 985 students were registered for Kindergarten. Across the 10 schools, surveys were completed for 60.8% of registered students. However, participation rates for individual schools ranged from 40.7% in Red Creek to 85.7% in Gananda.

<b>Pre-K Surveys School</b>	<b>Total Enrolled</b>	<b>Sample Number</b>	<b>% of Total</b>
Clyde-Savannah	54	43	79.6%
Gananda	70	60	85.7%
Lyons	64	49	76.5%
Marion	48	29	60.4%
Newark	165	97	58.7%
North Rose-Wolcott	107	60	56.0%
Palmyra-Macedon	120	84	70.0%
Red Creek	54	22	40.7%
Sodus	83	34	40.9%
Wayne	146	121	82.8%
<b>Total</b>	<b>985</b>	<b>599</b>	<b>60.8%</b>

The first set of tables give frequencies of responses for the total sample and for each school.

2015 Pre-K registration Survey	Total	Cly-Sav	Gananda	Lyons	Marion	Newark	NRW	Pal-Mac	Red Creek	Sodus	Wayne
<b>What is your relationship to the child being enrolled today?</b>	<b>Percent</b>	<b>Percent</b>	<b>Percent</b>	<b>Percent</b>	<b>Percent</b>	<b>Percent</b>	<b>Percent</b>	<b>Percent</b>	<b>Percent</b>	<b>Percent</b>	<b>Percent</b>
Mother or step-mother	83.4%	83.3%	76.6%	79.2%	87.5%	83.7%	86.9%	93.4%	76.0%	82.4%	80.3%
Father or step father	10.9%	14.6%	14.1%	11.3%	12.5%	8.7%	8.2%	3.3%	20.0%	8.8%	14.6%
Grandparent	2.3%	0.0%	6.3%	1.9%	0.0%	3.8%	0.0%	2.2%	4.0%	5.9%	0.7%
Other relative	2.8%	2.1%	3.1%	5.7%	0.0%	1.9%	3.3%	1.1%	0.0%	2.9%	4.4%
Legal guardian	0.6%	0.0%	0.0%	1.9%	0.0%	1.9%	1.6%	0.0%	0.0%	0.0%	0.0%
Total											

2015 Pre-K registration Survey	Total	Cly-Sav	Gananda	Lyons	Marion	Newark	NRW	Pal-Mac	Red Creek	Sodus	Wayne
<b>How many times has this child moved in the last five years?</b>	<b>Percent</b>	<b>Percent</b>	<b>Percent</b>	<b>Percent</b>	<b>Percent</b>	<b>Percent</b>	<b>Percent</b>	<b>Percent</b>	<b>Percent</b>	<b>Percent</b>	<b>Percent</b>
He/she have not moved	43.9%	40.0%	53.3%	45.8%	44.8%	33.0%	41.4%	28.7%	54.5%	53.1%	56.4%
He/she moved once	32.6%	35.6%	23.3%	22.9%	37.9%	36.1%	27.6%	43.7%	31.8%	18.8%	34.2%
He/she moved twice	12.8%	13.3%	11.7%	20.8%	13.8%	15.5%	15.5%	11.5%	13.6%	15.6%	6.0%
He/she moved three times	6.2%	4.4%	6.7%	6.3%	3.4%	8.2%	8.6%	10.3%	0.0%	12.5%	0.9%
He/she moved four or more times	4.5%	6.7%	5.0%	4.2%	0.0%	7.2%	6.9%	5.7%	0.0%	0.0%	2.6%



**2015 Pre-K registration Survey**

In a typical week, how many hours does this child spend with his/her family in activities such as going to the library, participating in scouts, sports, organized recreation, counseling, volunteer fire department, siblings' school events, church, family field trips or other activities.

	<b>Total</b>	<b>Cly-Sav</b>	<b>Gananda</b>	<b>Lyons</b>	<b>Marion</b>	<b>Newark</b>	<b>NRW</b>	<b>Pal-Mac</b>	<b>Red Creek</b>	<b>Sodus</b>	<b>Wayne</b>
	<b>Percent</b>	<b>Percent</b>	<b>Percent</b>	<b>Percent</b>	<b>Percent</b>	<b>Percent</b>	<b>Percent</b>	<b>Percent</b>	<b>Percent</b>	<b>Percent</b>	<b>Percent</b>

He/she doesn't spend any time doing activities with the family.	1.2%	2.2%	1.7%	2.1%	10.3%	16.1%	1.8%	15.9%	4.5%	6.5%	0.8%
He/she spends between one(1) or two(2) hours doing activities with the family	13.1%	15.6%	10.0%	10.4%	24.1%	40.2%	17.5%	26.1%	22.7%	22.6%	9.3%
He/she spends between three(3) or four(4) hours doing activities with the family	27.9%	15.6%	25.0%	29.2%	65.5%	43.7%	35.1%	58.0%	72.7%	29.0%	26.3%
He/she spends five(5) or more hours doing activities with the family	57.8%	66.7%	63.3%	58.3%	0.0%	0.0%	45.6%	0.0%	0.0%	41.9%	63.6%

**At any point prior to Kindergarten, did your child attend:**

*(check all that apply)*

	<b>Total</b>	<b>Cly-Sav</b>	<b>Gananda</b>	<b>Lyons</b>	<b>Marion</b>	<b>Newark</b>	<b>NRW</b>	<b>Pal-Mac</b>	<b>Red Creek</b>	<b>Sodus</b>	<b>Wayne</b>
	<b>Percent</b>	<b>Percent</b>	<b>Percent</b>	<b>Percent</b>	<b>Percent</b>	<b>Percent</b>	<b>Percent</b>	<b>Percent</b>	<b>Percent</b>	<b>Percent</b>	<b>Percent</b>

Stayed with family member or babysitter	47.5%	30.4%	43.3%	57.1%	55.2%	45.9%	32.1%	46.6%	68.2%	26.5%	60.3%
Structured Daycare (private)	25.6%	21.7%	25.0%	16.3%	24.1%	28.6%	18.5%	27.3%	18.2%	20.6%	33.1%
Pre-Kindergarten at a school	60.9%	63.0%	45.0%	67.3%	75.9%	74.5%	40.7%	67.0%	68.2%	52.9%	55.4%
Head Start	14.4%	28.3%	5.0%	28.6%	6.9%	24.5%	18.5%	2.3%	0.0%	14.7%	9.1%
Private or co-op Preschool Program	71.0%	71.0%	71.0%	71.0%	71.0%	71.0%	71.0%	71.0%	71.0%	71.0%	71.0%

<b>2015 Pre-K registration Survey</b>		<b>Total</b>	<b>Cly-Sav</b>	<b>Gananda</b>	<b>Lyons</b>	<b>Marion</b>	<b>Newark</b>	<b>NRW</b>	<b>Pal-Mac</b>	<b>Red Creek</b>	<b>Sodus</b>	<b>Wayne</b>
How often does this child's family travel farther than 20 miles from home?		<b>Percent</b>	<b>Percent</b>	<b>Percent</b>	<b>Percent</b>	<b>Percent</b>	<b>Percent</b>	<b>Percent</b>	<b>Percent</b>	<b>Percent</b>	<b>Percent</b>	<b>Percent</b>
	Rarely or never	9.6%	6.8%	10.2%	6.1%	10.3%	12.4%	7.1%	15.9%	4.8%	6.1%	7.6%
	A few times a year	30.8%	25.0%	32.2%	34.7%	34.5%	29.9%	25.0%	33.0%	0.0%	42.4%	33.6%
	A few times a month	42.2%	36.4%	35.6%	51.0%	41.4%	44.3%	46.4%	39.8%	71.4%	33.3%	39.5%
	More than once a week	17.5%	31.8%	22.0%	8.2%	13.8%	13.4%	21.4%	11.4%	23.8%	18.2%	19.3%

<b>2015 Pre-K registration Survey</b>		<b>Total</b>	<b>Cly-Sav</b>	<b>Gananda</b>	<b>Lyons</b>	<b>Marion</b>	<b>Newark</b>	<b>NRW</b>	<b>Pal-Mac</b>	<b>Red Creek</b>	<b>Sodus</b>	<b>Wayne</b>
How often does the child's family eat any meals together?		<b>Percent</b>	<b>Percent</b>	<b>Percent</b>	<b>Percent</b>	<b>Percent</b>	<b>Percent</b>	<b>Percent</b>	<b>Percent</b>	<b>Percent</b>	<b>Percent</b>	<b>Percent</b>
	Rarely	0.0%	0.0%	0.0%	0.0%	0.0%	0.0%	0.0%	0.0%	0.0%	0.0%	0.0%
	Sometimes	4.2%	2.3%	3.6%	6.1%	3.4%	4.1%	3.6%	4.7%	0.0%	5.9%	1.7%
	Usually	35.1%	36.4%	41.1%	30.6%	27.6%	25.8%	41.8%	43.5%	31.8%	20.6%	40.0%
	Always	60.7%	61.4%	55.4%	63.3%	69.0%	70.1%	54.5%	51.8%	68.2%	73.5%	58.3%

<b>2015 Pre-K registration Survey</b>		<b>Total</b>	<b>Cly-Sav</b>	<b>Gananda</b>	<b>Lyons</b>	<b>Marion</b>	<b>Newark</b>	<b>NRW</b>	<b>Pal-Mac</b>	<b>Red Creek</b>	<b>Sodus</b>	<b>Wayne</b>
Does this child have a set bedtime?		<b>Percent</b>	<b>Percent</b>	<b>Percent</b>	<b>Percent</b>	<b>Percent</b>	<b>Percent</b>	<b>Percent</b>	<b>Percent</b>	<b>Percent</b>	<b>Percent</b>	<b>Percent</b>
	Yes	94.4%	97.7%	91.7%	87.8%	96.6%	95.8%	98.2%	95.2%	100.0%	97.1%	91.6%
	No	5.6%	2.3%	8.3%	12.2%	3.4%	4.2%	1.8%	4.8%	0.0%	2.9%	8.4%

<b>2015 Pre-K registration Survey</b>		<b>Total</b>	<b>Cly-Sav</b>	<b>Gananda</b>	<b>Lyons</b>	<b>Marion</b>	<b>Newark</b>	<b>NRW</b>	<b>Pal-Mac</b>	<b>Red Creek</b>	<b>Sodus</b>	<b>Wayne</b>
How often does this child go to bed at the set bedtime?		<b>Percent</b>	<b>Percent</b>	<b>Percent</b>	<b>Percent</b>	<b>Percent</b>	<b>Percent</b>	<b>Percent</b>	<b>Percent</b>	<b>Percent</b>	<b>Percent</b>	<b>Percent</b>
	Rarely	2.1%	2.3%	3.6%	6.1%	3.4%	0.0%	3.6%	1.2%	0.0%	2.9%	0.9%
	Sometimes	4.5%	2.3%	7.1%	6.1%	3.4%	4.2%	7.3%	4.8%	9.1%	2.9%	2.7%
	Usually	63.0%	60.5%	73.2%	53.1%	58.6%	60.4%	60.0%	60.7%	86.4%	58.8%	70.3%
	Always	30.4%	34.9%	16.1%	34.7%	34.5%	35.4%	29.1%	33.3%	4.5%	35.3%	26.1%

**2015 Pre-K registration Survey**

How often does this child follow rules at home?

	<b>Total</b>	<b>Cly-Sav</b>	<b>Gananda</b>	<b>Lyons</b>	<b>Marion</b>	<b>Newark</b>	<b>NRW</b>	<b>Pal-Mac</b>	<b>Red Creek</b>	<b>Sodus</b>	<b>Wayne</b>
	<b>Percent</b>	<b>Percent</b>	<b>Percent</b>	<b>Percent</b>	<b>Percent</b>	<b>Percent</b>	<b>Percent</b>	<b>Percent</b>	<b>Percent</b>	<b>Percent</b>	<b>Percent</b>
Rarely	0.8%	0.0%	3.4%	0.0%	0.0%	1.0%	0.0%	1.2%	0.0%	0.0%	0.8%
Sometimes	13.9%	11.4%	8.6%	25.0%	13.8%	9.3%	27.8%	12.9%	9.1%	17.6%	10.8%
Usually	73.3%	77.3%	75.9%	64.6%	79.3%	78.4%	59.3%	72.9%	86.4%	67.6%	74.2%
Always	12.0%	11.4%	12.1%	10.4%	6.9%	11.3%	13.0%	12.9%	4.5%	14.7%	14.2%

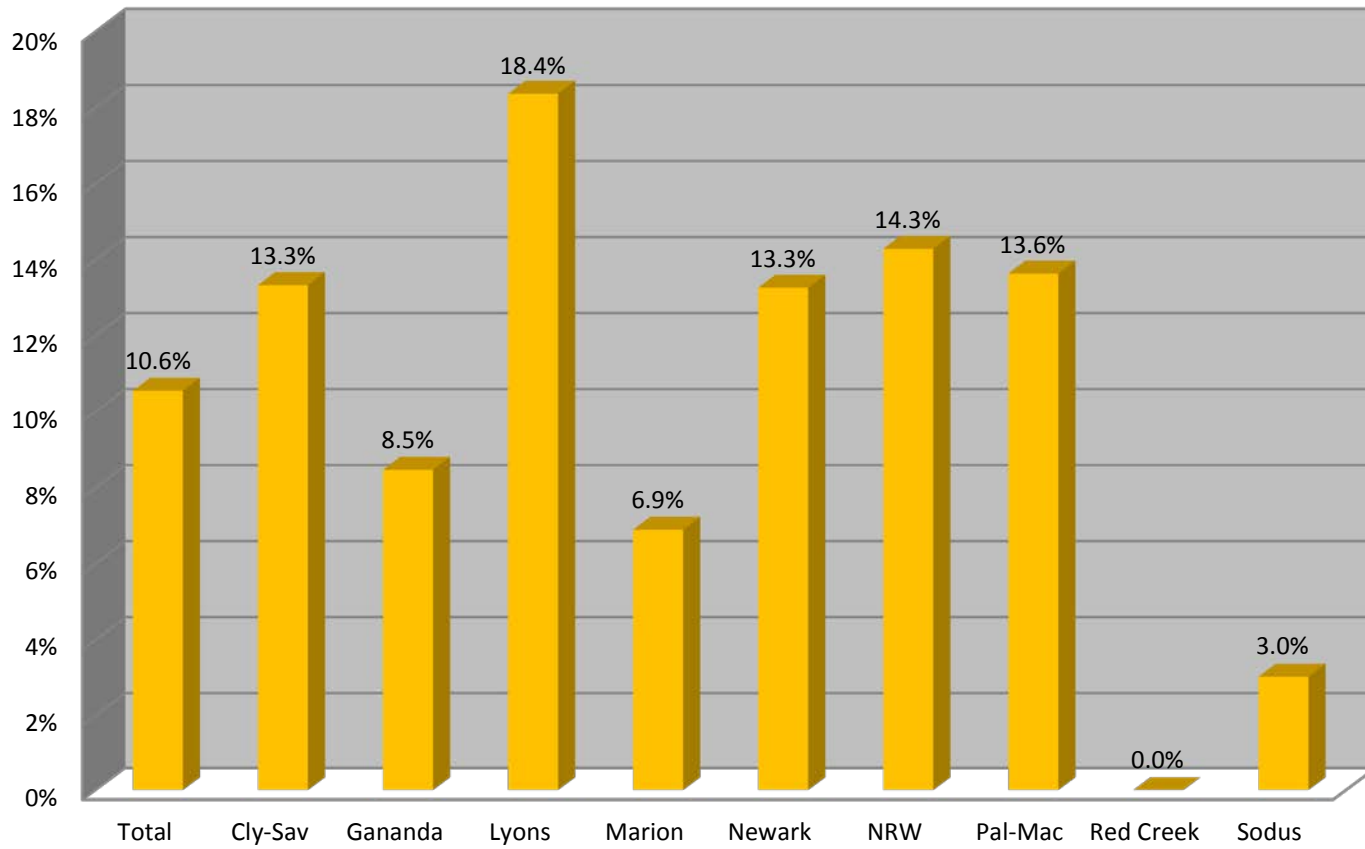
**2015 Pre-K registration Survey**

The following are specific traumas known as Adverse Childhood Experiences that families commonly encounter.

death of a parent; parental divorce or separation; incarceration of a parent; drug or alcohol abuse; mental health problems; domestic violence; physical neglect; physical abuse; emotional neglect; emotional abuse or sexual abuse.

	<b>Total</b>	<b>Cly-Sav</b>	<b>Gananda</b>	<b>Lyons</b>	<b>Marion</b>	<b>Newark</b>	<b>NRW</b>	<b>Pal-Mac</b>	<b>Red Creek</b>	<b>Sodus</b>	<b>Wayne</b>
	<b>Percent</b>	<b>Percent</b>	<b>Percent</b>	<b>Percent</b>	<b>Percent</b>	<b>Percent</b>	<b>Percent</b>	<b>Percent</b>	<b>Percent</b>	<b>Percent</b>	<b>Percent</b>
Zero	71.2%	73.3%	79.7%	65.3%	72.4%	59.2%	64.3%	70.5%	86.4%	75.8%	78.0%
One	18.3%	13.3%	11.9%	16.3%	20.7%	27.6%	21.4%	15.9%	13.6%	21.2%	16.1%
Two or Three	7.9%	11.1%	5.1%	14.3%	6.9%	8.2%	10.7%	10.2%	0.0%	3.0%	5.1%
Four or more	2.7%	2.2%	3.4%	4.1%	0.0%	5.1%	3.6%	3.4%	0.0%	0.0%	0.8%

## Two or More Trauma



<b>2015 Pre-K registration Survey</b>		<b>Total</b>	<b>Cly-Sav</b>	<b>Gananda</b>	<b>Lyons</b>	<b>Marion</b>	<b>Newark</b>	<b>NRW</b>	<b>Pal-Mac</b>	<b>Red Creek</b>	<b>Sodus</b>	<b>Wayne</b>
When this child gets upset, how often does he/she calm down within 15 minutes without help?		<b>Percent</b>	<b>Percent</b>	<b>Percent</b>	<b>Percent</b>	<b>Percent</b>	<b>Percent</b>	<b>Percent</b>	<b>Percent</b>	<b>Percent</b>	<b>Percent</b>	<b>Percent</b>
Rarely		3.2%	0.0%	3.3%	2.0%	3.4%	4.2%	5.4%	2.4%	4.5%	9.1%	1.7%
Sometimes		12.7%	9.3%	5.0%	20.4%	10.3%	13.5%	17.9%	22.6%	4.5%	6.1%	8.5%
Usually		51.5%	53.5%	41.7%	53.1%	44.8%	53.1%	55.4%	48.8%	72.7%	51.5%	51.7%
Always		32.5%	37.2%	50.0%	24.5%	41.4%	29.2%	21.4%	26.2%	18.2%	33.3%	38.1%

<b>2015 Pre-K registration Survey</b>		<b>Total</b>	<b>Cly-Sav</b>	<b>Gananda</b>	<b>Lyons</b>	<b>Marion</b>	<b>Newark</b>	<b>NRW</b>	<b>Pal-Mac</b>	<b>Red Creek</b>	<b>Sodus</b>	<b>Wayne</b>
After periods of exciting activity how often does he/she calm down within 15 minutes without help?		<b>Percent</b>	<b>Percent</b>	<b>Percent</b>	<b>Percent</b>	<b>Percent</b>	<b>Percent</b>	<b>Percent</b>	<b>Percent</b>	<b>Percent</b>	<b>Percent</b>	<b>Percent</b>
Rarely		2.2%	4.8%	1.7%	2.0%	3.4%	2.0%	3.7%	1.2%	0.0%	2.9%	1.7%
Sometimes		14.3%	7.1%	13.3%	24.5%	6.9%	19.4%	20.4%	12.9%	20.0%	14.7%	7.7%
Usually		54.6%	59.5%	46.7%	46.9%	48.3%	53.1%	51.9%	55.3%	65.0%	61.8%	59.8%
Always		28.9%	28.6%	38.3%	26.5%	41.4%	25.5%	24.1%	30.6%	15.0%	20.6%	30.8%

<b>2015 Pre-K registration Survey</b>		<b>Total</b>	<b>Cly-Sav</b>	<b>Gananda</b>	<b>Lyons</b>	<b>Marion</b>	<b>Newark</b>	<b>NRW</b>	<b>Pal-Mac</b>	<b>Red Creek</b>	<b>Sodus</b>	<b>Wayne</b>
Please put a check mark in front of the devices that your child uses for learning or play.		<b>Percent</b>	<b>Percent</b>	<b>Percent</b>	<b>Percent</b>	<b>Percent</b>	<b>Percent</b>	<b>Percent</b>	<b>Percent</b>	<b>Percent</b>	<b>Percent</b>	<b>Percent</b>
Desktop Computer		0.0%	0.0%	0.0%	0.0%	0.0%	0.0%	0.0%	0.0%	0.0%	0.0%	0.0%
Laptop Computer		32.3%	37.0%	41.7%	34.7%	37.9%	32.7%	21.0%	29.5%	22.7%	20.6%	34.7%
iPad/Tablet		70.0%	67.4%	86.7%	61.2%	82.8%	72.4%	40.7%	67.0%	54.5%	76.5%	77.7%
Leap Frog		40.8%	43.5%	41.7%	34.7%	41.4%	32.7%	32.1%	39.8%	50.0%	44.1%	48.8%
Cell Phone		55.1%	63.0%	60.0%	44.9%	58.6%	59.2%	30.9%	51.1%	54.5%	52.9%	64.5%
Play Station/X Box/Wii		32.6%	50.0%	26.7%	36.7%	27.6%	30.6%	23.5%	28.4%	36.4%	35.3%	34.7%
Kindle/Nook (e-reader)		18.3%	15.2%	15.0%	14.3%	17.2%	23.5%	9.9%	12.5%	22.7%	26.5%	24.0%
Handheld Nintendo or Play Station device		16.2%	21.7%	6.7%	26.5%	17.2%	15.3%	16.0%	11.4%	9.1%	23.5%	16.5%
Other device		9.4%	4.3%	8.3%	14.3%	10.3%	10.2%	8.6%	8.0%	4.5%	14.7%	9.1%



<b>2015 Pre-K registration Survey</b>		<b>Total</b>	<b>Cly-Sav</b>	<b>Gananda</b>	<b>Lyons</b>	<b>Marion</b>	<b>Newark</b>	<b>NRW</b>	<b>Pal-Mac</b>	<b>Red Creek</b>	<b>Sodus</b>	<b>Wayne</b>
How often does this child play with other children not in his or her family?		<b>Percent</b>	<b>Percent</b>	<b>Percent</b>	<b>Percent</b>	<b>Percent</b>	<b>Percent</b>	<b>Percent</b>	<b>Percent</b>	<b>Percent</b>	<b>Percent</b>	<b>Percent</b>
Rarely		3.9%	2.3%	5.1%	4.1%	3.4%	5.2%	9.1%	2.4%	10.0%	2.9%	0.8%
Sometimes		33.6%	38.6%	16.9%	44.9%	31.0%	43.3%	49.1%	31.8%	30.0%	26.5%	25.0%
Usually		37.8%	43.2%	33.9%	28.6%	37.9%	33.0%	30.9%	44.7%	35.0%	52.9%	40.0%
Always		24.7%	15.9%	44.1%	22.4%	27.6%	18.6%	10.9%	21.2%	25.0%	17.6%	34.2%

<b>2015 Pre-K registration Survey</b>		<b>Total</b>	<b>Cly-Sav</b>	<b>Gananda</b>	<b>Lyons</b>	<b>Marion</b>	<b>Newark</b>	<b>NRW</b>	<b>Pal-Mac</b>	<b>Red Creek</b>	<b>Sodus</b>	<b>Wayne</b>
How well does this child play with other children?		<b>Percent</b>	<b>Percent</b>	<b>Percent</b>	<b>Percent</b>	<b>Percent</b>	<b>Percent</b>	<b>Percent</b>	<b>Percent</b>	<b>Percent</b>	<b>Percent</b>	<b>Percent</b>
He/she has not played enough with other children for me to know		0.7%	0.0%	0.0%	0.0%	0.0%	2.1%	1.8%	1.1%	0.0%	0.0%	0.0%
He/she does not play well with other children		0.5%	0.0%	0.0%	0.0%	0.0%	5.2%	14.5%	1.1%	5.0%	5.9%	0.0%
He/she sometimes plays well with other children		5.6%	2.3%	6.7%	10.2%	0.0%	64.9%	61.8%	3.3%	70.0%	5.9%	3.3%
He/she usually plays well with other children		58.7%	65.9%	43.3%	57.1%	55.2%	27.8%	21.8%	52.2%	25.0%	55.9%	60.0%
He/she always plays well with other children		34.6%	31.8%	50.0%	32.7%	44.8%	0.0%	0.0%	42.2%	0.0%	32.4%	36.7%

<b>2015 Pre-K registration Survey</b>		<b>Total</b>	<b>Cly-Sav</b>	<b>Gananda</b>	<b>Lyons</b>	<b>Marion</b>	<b>Newark</b>	<b>NRW</b>	<b>Pal-Mac</b>	<b>Red Creek</b>	<b>Sodus</b>	<b>Wayne</b>
How often does this child independently button and zip clothing on his/her own?		<b>Percent</b>	<b>Percent</b>	<b>Percent</b>	<b>Percent</b>	<b>Percent</b>	<b>Percent</b>	<b>Percent</b>	<b>Percent</b>	<b>Percent</b>	<b>Percent</b>	<b>Percent</b>
Rarely		3.4%	6.8%	6.8%	6.1%	0.0%	3.1%	1.8%	1.2%	4.5%	2.9%	2.5%
Sometimes		17.4%	6.8%	15.3%	18.4%	7.1%	21.9%	26.8%	16.3%	18.2%	11.8%	18.6%
Usually		45.4%	38.6%	40.7%	44.9%	53.6%	42.7%	41.1%	48.8%	45.5%	61.8%	45.8%
Always		33.8%	47.7%	37.3%	30.6%	39.3%	32.3%	30.4%	33.7%	31.8%	23.5%	33.1%

<b>2015 Pre-K registration Survey</b>		<b>Total</b>	<b>Cly-Sav</b>	<b>Gananda</b>	<b>Lyons</b>	<b>Marion</b>	<b>Newark</b>	<b>NRW</b>	<b>Pal-Mac</b>	<b>Red Creek</b>	<b>Sodus</b>	<b>Wayne</b>
How often does this child move from one activity to another with little difficulty such as play time to meal time?		<b>Percent</b>	<b>Percent</b>	<b>Percent</b>	<b>Percent</b>	<b>Percent</b>	<b>Percent</b>	<b>Percent</b>	<b>Percent</b>	<b>Percent</b>	<b>Percent</b>	<b>Percent</b>
Rarely		2.9%	0.0%	5.1%	6.1%	0.0%	2.1%	1.8%	3.5%	4.5%	5.9%	1.7%
Sometimes		15.2%	11.4%	20.3%	20.4%	6.9%	16.5%	20.0%	16.3%	4.5%	11.8%	12.6%
Usually		59.9%	56.8%	45.8%	59.2%	69.0%	59.8%	58.2%	65.1%	77.3%	58.8%	60.5%
Always		22.1%	31.8%	28.8%	14.3%	24.1%	21.6%	20.0%	15.1%	13.6%	23.5%	25.2%

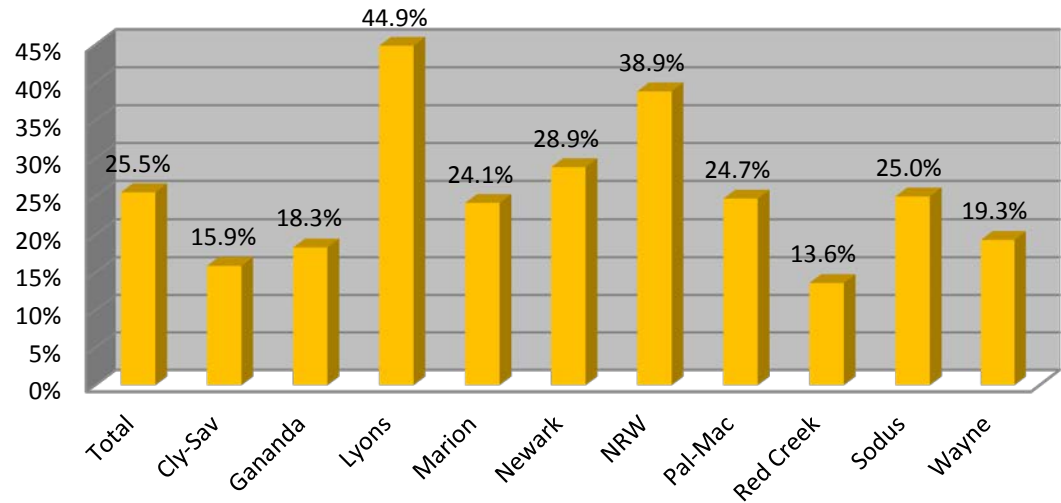
<b>2015 Pre-K registration Survey</b>		<b>Total</b>	<b>Cly-Sav</b>	<b>Gananda</b>	<b>Lyons</b>	<b>Marion</b>	<b>Newark</b>	<b>NRW</b>	<b>Pal-Mac</b>	<b>Red Creek</b>	<b>Sodus</b>	<b>Wayne</b>
Can this child use words to describe how he/she feels? ("I'm mad, I'm sad, I'm happy)		<b>Percent</b>	<b>Percent</b>	<b>Percent</b>	<b>Percent</b>	<b>Percent</b>	<b>Percent</b>	<b>Percent</b>	<b>Percent</b>	<b>Percent</b>	<b>Percent</b>	<b>Percent</b>
Yes		91.4%	93.2%	88.1%	89.8%	96.6%	91.8%	83.6%	89.5%	100.0%	91.2%	95.0%
No		0.3%	0.0%	0.0%	0.0%	0.0%	0.0%	1.8%	1.2%	0.0%	0.0%	0.0%
Sometimes		8.2%	6.8%	11.9%	10.2%	3.4%	8.2%	14.5%	9.3%	0.0%	8.8%	5.0%

<b>2015 Pre-K registration Survey</b>		<b>Total</b>	<b>Cly-Sav</b>	<b>Gananda</b>	<b>Lyons</b>	<b>Marion</b>	<b>Newark</b>	<b>NRW</b>	<b>Pal-Mac</b>	<b>Red Creek</b>	<b>Sodus</b>	<b>Wayne</b>
How often do you or another adult read with this child?		<b>Percent</b>	<b>Percent</b>	<b>Percent</b>	<b>Percent</b>	<b>Percent</b>	<b>Percent</b>	<b>Percent</b>	<b>Percent</b>	<b>Percent</b>	<b>Percent</b>	<b>Percent</b>
He/she never reads with me or another adult		0.5%	0.0%	0.0%	0.0%	0.0%	1.0%	1.9%	1.2%	0.0%	0.0%	0.0%
He/she reads with me or another adult 3 or less times a week		25.0%	15.9%	18.3%	44.9%	24.1%	27.8%	37.0%	23.5%	13.6%	25.0%	19.3%
He/she reads with me or another adult 4-6 times a week		46.9%	47.7%	56.7%	44.9%	48.3%	47.4%	38.9%	47.1%	40.9%	50.0%	45.4%
He/she reads with me or other adults 7 or more times a week		27.6%	36.4%	25.0%	10.2%	27.6%	23.7%	22.2%	28.2%	45.5%	25.0%	35.3%

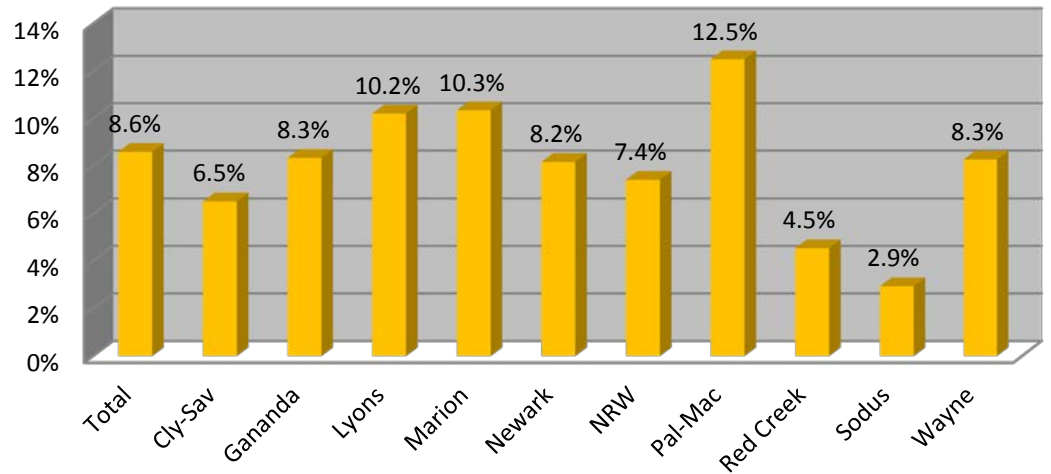
	<b>Total</b>	<b>Cly-Sav</b>	<b>Gananda</b>	<b>Lyons</b>	<b>Marion</b>	<b>Newark</b>	<b>NRW</b>	<b>Pal-Mac</b>	<b>Red Creek</b>	<b>Sodus</b>	<b>Wayne</b>
<b>2015 How many books, magazines (print material) are in this child's home?</b>	<b>Percent</b>	<b>Percent</b>	<b>Percent</b>	<b>Percent</b>	<b>Percent</b>	<b>Percent</b>	<b>Percent</b>	<b>Percent</b>	<b>Percent</b>	<b>Percent</b>	<b>Percent</b>
There are few or none	1.5%	6.8%	0.0%	0.0%	0.0%	1.0%	0.0%	2.4%	0.0%	6.5%	0.8%
There are books, magazines or other printed material in one or two places in the child's home	15.9%	15.9%	11.7%	22.4%	24.1%	18.8%	16.1%	17.9%	0.0%	16.1%	12.6%
There are printed materials in some rooms	15.9%	4.5%	13.3%	10.2%	17.2%	9.4%	28.6%	11.9%	22.7%	22.6%	22.7%
In almost every room	66.5%	72.7%	75.0%	67.3%	58.6%	70.8%	55.4%	67.9%	77.3%	54.8%	63.9%

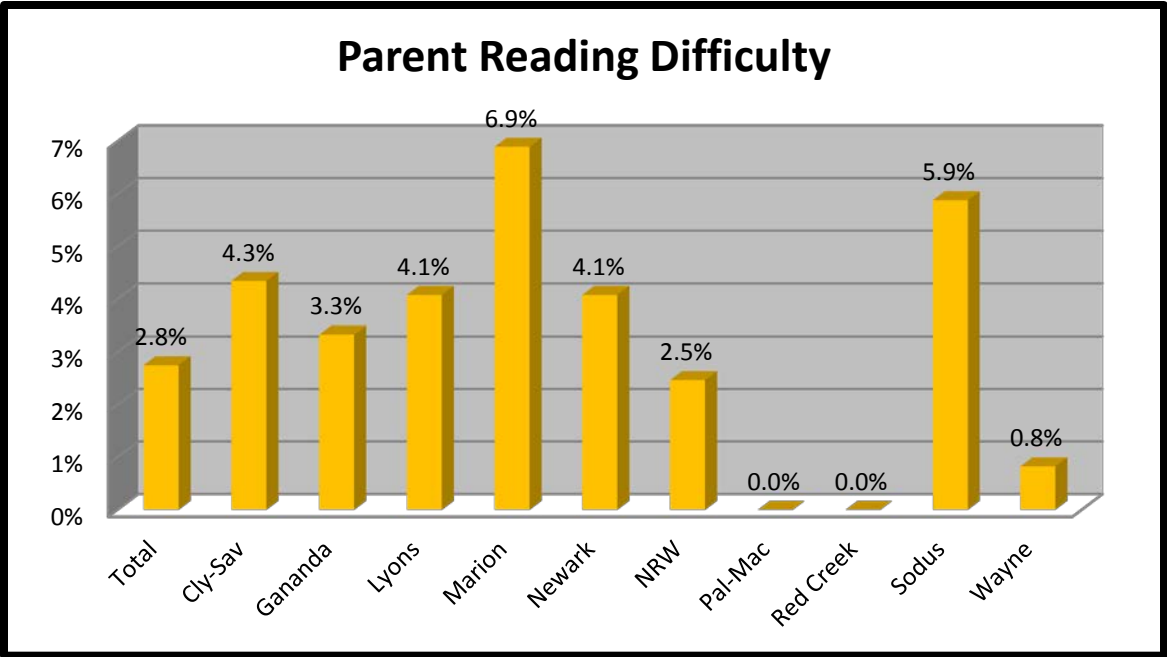
	<b>Total</b>	<b>Cly-Sav</b>	<b>Gananda</b>	<b>Lyons</b>	<b>Marion</b>	<b>Newark</b>	<b>NRW</b>	<b>Pal-Mac</b>	<b>Red Creek</b>	<b>Sodus</b>	<b>Wayne</b>
<b>2015 Pre-K registration Survey</b>	<b>Percent</b>	<b>Percent</b>	<b>Percent</b>	<b>Percent</b>	<b>Percent</b>	<b>Percent</b>	<b>Percent</b>	<b>Percent</b>	<b>Percent</b>	<b>Percent</b>	<b>Percent</b>
Which best describes your reading habits (not this child's habits):											
I rarely read	8.6%	6.5%	8.3%	10.2%	10.3%	8.2%	7.4%	12.5%	4.5%	2.9%	8.3%
I read for work	43.9%	2.2%	65.0%	32.7%	44.8%	40.8%	27.2%	42.0%	63.6%	32.4%	51.2%
I read for pleasure	80.2%	80.4%	83.3%	81.6%	79.3%	86.7%	59.3%	80.7%	81.8%	73.5%	81.0%
I have some difficulty reading	2.8%	4.3%	3.3%	4.1%	6.9%	4.1%	2.5%	0.0%	0.0%	5.9%	0.8%

### Child Seldom or Never Reads With an Adult



### Parent Rarely Reads

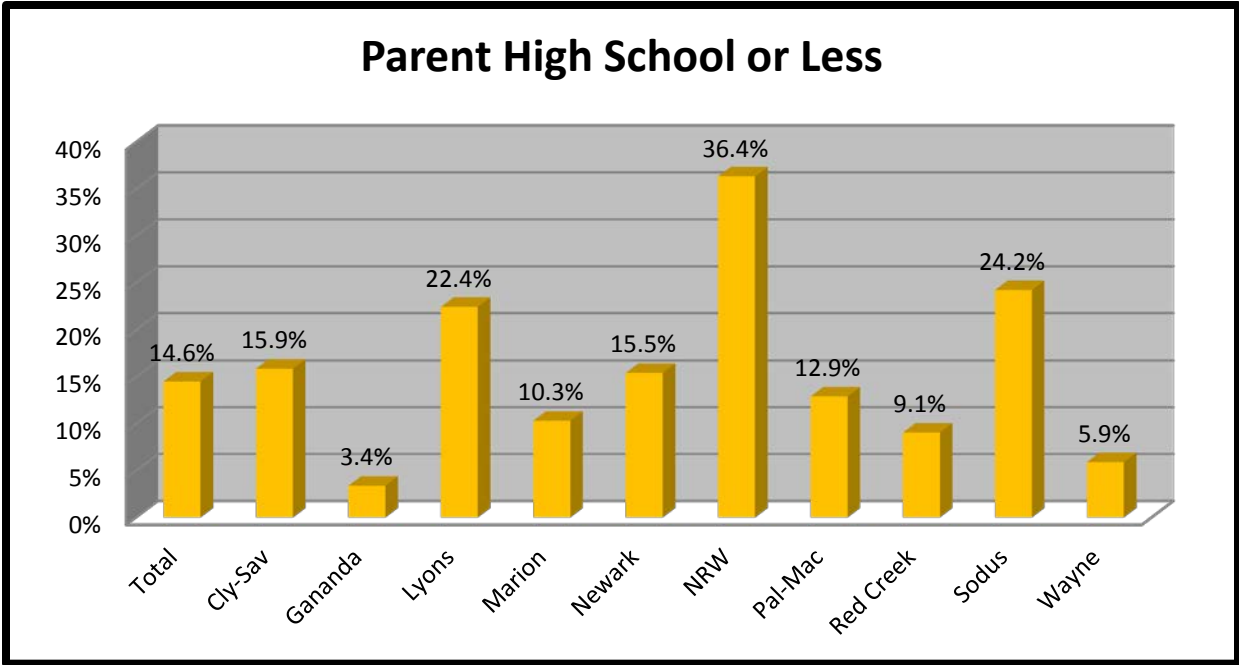




**2015 Pre-K registration Survey**

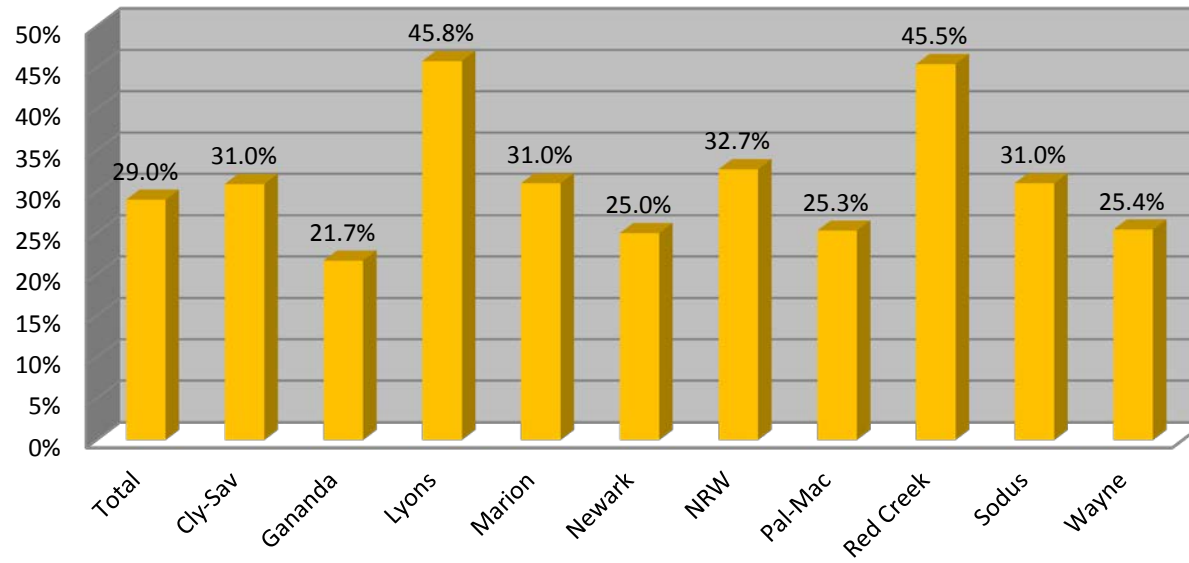
What is the highest level of education reached by anyone in the child's household:

	Total	Cly-Sav	Gananda	Lyons	Marion	Newark	NRW	Pal-Mac	Red Creek	Sodus	Wayne
	Percent	Percent	Percent	Percent	Percent	Percent	Percent	Percent	Percent	Percent	Percent
Some school	2.0%	4.5%	0.0%	0.0%	0.0%	1.0%	10.9%	1.2%	4.5%	3.0%	0.0%
GED/HS Diploma	12.5%	11.4%	3.4%	22.4%	10.3%	14.4%	25.5%	11.8%	4.5%	21.2%	5.9%
Some college	16.4%	20.5%	13.6%	18.4%	17.2%	22.7%	12.7%	22.4%	9.1%	21.2%	7.6%
Some Trade/Technical School	4.2%	4.5%	3.4%	6.1%	10.3%	4.1%	3.6%	0.0%	9.1%	12.1%	2.5%
Completed Trade/Technical School	6.1%	11.4%	6.8%	6.1%	3.4%	5.2%	9.1%	0.0%	4.5%	6.1%	8.5%
Completed 2 Year college	16.1%	15.9%	15.3%	16.3%	17.2%	12.4%	12.7%	17.6%	27.3%	24.2%	15.3%
Completed 4 Year college or more	42.6%	31.8%	57.6%	30.6%	41.4%	40.2%	25.5%	47.1%	40.9%	12.1%	60.2%



2015 Pre-K registration Survey		Total	Cly-Sav	Gananda	Lyons	Marion	Newark	NRW	Pal-Mac	Red	Sodus	Wayne
How long was this child breastfed?		Percent	Percent	Percent	Percent	Percent	Percent	Percent	Percent	Creek	Percent	Percent
He/she was not breastfed		29.0%	31.0%	21.7%	45.8%	31.0%	25.0%	32.7%	25.3%	45.5%	31.0%	25.4%
He/she was breastfed for one(1) months		16.0%	14.3%	15.0%	14.6%	17.2%	11.5%	16.4%	22.9%	9.1%	31.0%	13.6%
He/she was breastfed for 2-3 months		14.3%	21.4%	13.3%	10.4%	6.9%	15.6%	21.8%	12.0%	9.1%	10.3%	14.4%
He/she was breastfed for 4 months or more		14.3%	11.9%	20.0%	12.5%	20.7%	15.6%	10.9%	15.7%	4.5%	10.3%	13.6%
Mother could not breast feed for medical or other reason		25.4%	19.0%	30.0%	14.6%	24.1%	28.1%	18.2%	24.1%	31.8%	17.2%	33.1%
I don't know		1.0%	2.4%	0.0%	2.1%	0.0%	4.2%	0.0%	0.0%	0.0%	0.0%	0.0%

## Child Not Breastfed



There were significant differences in responses from parents with at least some college education compared to those with high school or less. The second set of tables show these comparisons.

<b>Parents' College Experience- School</b>	<b>% With no College</b>	<b>% With Some College</b>	<b>Ratio</b>
Clyde-Savannah	7.3%	7.3%	1.00
Gananda	2.4%	11.3%	4.63
Lyons	8.9%	7.5%	0.84
Marion	2.4%	5.1%	2.11
Newark	13.0%	16.2%	1.25
North Rose-Wolcott	37.4%	6.9%	0.19
Palmyra-Macedon	11.4%	14.7%	1.29
Red Creek	1.6%	4.0%	2.44
Sodus	7.3%	5.0%	0.68
Wayne	8.1%	22.0%	2.70

<b>What is your relationship to the child being enrolled today?</b>	<b>% With no College</b>	<b>% With Some College</b>	<b>Ratio</b>
Mother or step-mother	84.8%	69.1%	0.82
Father or step father	5.7%	9.9%	1.74
Grandparent	2.9%	18.7%	6.53
Other relative	0.0%	1.7%	na
Legal guardian	6.7%	0.6%	0.09

<b>How many times has this child moved in the last five years?</b>	<b>% With no College</b>	<b>% With Some College</b>	<b>Diff</b>
He/she have not moved	30.9%	46.4%	1.50
He/she moved once	36.1%	31.9%	0.88
He/she moved twice	20.6%	11.2%	0.55
He/she moved three times	10.3%	5.4%	0.53
He/she moved four or more times	2.1%	5.0%	2.43



**In a typical week, how many hours does this child spend with his/her family in activities such as going to the library, participating in scouts, sports, organized recreation, counseling, volunteer fire department, siblings' school events, church, family field trips or other activities.**

**%  
With  
no  
College**      **%  
With  
Some  
College**

**Ratio**

He/she doesn't spend any time doing activities with the family.	3.1%	0.8%	0.26
He/she spends between one(1) or two(2) hours doing activities with the family	19.8%	11.8%	0.60
He/she spends between three(3) or four(4) hours doing activities with the family	34.4%	26.7%	0.78
He/she spends five(5) or more hours doing activities with the family	42.7%	60.7%	1.42

**How many books, magazines (print material) are in this child's home?**

**%  
With  
no  
College**      **%  
With  
Some  
College**      **Ratio**

There are few or none	7.8%	0.4%	0.05
There are books, magazines or other printed material in one or two places in the child's home	27.8%	13.8%	0.50
There are printed materials in some rooms	15.6%	16.0%	1.03
In almost every room	48.9%	69.8%	1.43

**How often does this child's family travel farther than 20 miles from home?**

**%  
With  
no  
College**      **%  
With  
Some  
College**      **Ratio**

Rarely or never	24.0%	6.8%	0.28
A few times a year	29.2%	31.1%	1.06
A few times a month	34.4%	43.7%	1.27
More than once a week	12.5%	18.4%	1.47

	<b>% With no College</b>	<b>% With Some College</b>	<b>Ratio</b>
<b>How long was this child breastfed?</b>			
He/she was not breast fed (for medical or personal reasons)	47.1%	25.9%	0.55
He/she was breastfed for one(1) month or less	18.4%	15.6%	0.85
He/she was breastfed for 3 months or less	16.1%	13.9%	0.87
He/she was breastfed for 6 months or less	14.9%	14.1%	0.95
He/she was breastfed for more than 6 months	2.3%	29.5%	12.83
I don't know	1.1%	1.0%	0.88

	<b>% With no College</b>	<b>% With Some College</b>	<b>Ratio</b>
<b>How often does the child's family eat any meals together?</b>			
Rarely	0.0%	0.0%	na
Sometimes	7.6%	3.6%	0.47
Usually	29.3%	36.2%	1.23
Always	63.0%	60.2%	0.96

	<b>% With no College</b>	<b>% With Some College</b>	<b>Ratio</b>
<b>Does this child have a set bedtime?</b>			
Yes	89.2%	95.4%	1.07
No	10.8%	4.6%	0.43

	<b>% With no College</b>	<b>% With Some College</b>	<b>Ratio</b>
<b>How often does this child go to bed at the set bedtime?</b>			
Rarely	4.4%	1.6%	0.37
Sometimes	6.7%	4.1%	0.61
Usually	53.3%	64.8%	1.22
Always	35.6%	29.4%	0.83

<b>How often do you or another adult read with this child?</b>	<b>% With no College</b>	<b>% With Some College</b>	<b>Ratio</b>
He/she never reads with me or another adult	3.4%	0.0%	0.00
He/she read with me or another adult 3 or less times a week	39.3%	22.5%	0.57
He/she reads with me or another adult 4-6 times a week	48.3%	46.6%	0.96
He/she reads with me or other adults 7 or more times a week	9.0%	30.9%	3.44

<b>When this child gets upset, how often does he/she calm down within 15 minutes without help?</b>	<b>% With no College</b>	<b>% With Some College</b>	<b>Ratio</b>
Rarely	7.7%	2.4%	0.31
Sometimes	20.9%	11.2%	0.54
Usually	54.9%	50.9%	0.93
Always	16.5%	35.5%	2.15

<b>After periods of exciting activity how often does he/she calm down within 15 minutes without help?</b>	<b>% With no College</b>	<b>% With Some College</b>	<b>Ratio</b>
Rarely	6.7%	1.4%	0.21
Sometimes	17.8%	13.7%	0.77
Usually	60.0%	53.6%	0.89
Always	15.6%	31.3%	2.01

<b>How often does this child play with other children not in his or her family?</b>	<b>%</b>	<b>%</b>	<b>Ratio</b>
	<b>With no College</b>	<b>With Some College</b>	
Rarely	4.4%	3.8%	0.86
Sometimes	38.5%	32.7%	0.85
Usually	35.2%	38.3%	1.09
Always	22.0%	25.1%	1.14

<b>How well does this child play with other children?</b>	<b>%</b>	<b>%</b>	<b>Ratio</b>
	<b>With no College</b>	<b>With Some College</b>	
He/she has not played enough with other children for me to know	1.1%	0.6%	0.54
He/she does not play well with other children	2.2%	0.2%	0.09
He/she sometimes plays well with other children	9.9%	4.8%	0.48
He/she usually plays well with other children	63.7%	57.8%	0.91
He/she always plays well with other children	23.1%	36.7%	1.59

<b>How often does this child independently button and zip clothing on his/her own?</b>	<b>%</b>	<b>%</b>	<b>Ratio</b>
	<b>With no College</b>	<b>With Some College</b>	
Rarely	4.4%	3.2%	0.72
Sometimes	15.6%	17.7%	1.14
Usually	43.3%	45.8%	1.06
Always	36.7%	33.3%	0.91

How often does this child move from one activity to another with little difficulty such as play time to meal time?	%	%	Ratio
	With no College	With Some College	
Rarely	2.2%	3.0%	1.32
Sometimes	24.7%	13.5%	0.54
Usually	59.6%	60.0%	1.01
Always	13.5%	23.6%	1.75

---

Can this child focus on an enjoyable activity other than television or computer for at least fifteen minutes?	%	%	Ratio
	With no College	With Some College	
Yes	81.1%	92.9%	1.14
No	2.2%	0.6%	0.27
Sometimes	16.7%	6.5%	0.39

Can this child use words to describe how he/she feels? (“I’m mad, I’m sad, I’m happy)	%	%	Ratio
	With no College	With Some College	
Yes	84.3%	92.7%	1.10
No	1.1%	0.2%	0.18
Sometimes	14.6%	7.1%	0.49

---

Which best describes your reading habits( not this child’s habits):	%	%	Ratio
	With no College	With Some College	
I rarely read	21.2%	4.2%	0.20
I read for work	14.4%	35.0%	2.42
I read for pleasure	55.8%	59.7%	1.07
I have some difficulty reading	8.7%	1.1%	0.13