



# **MEETING AGENDA**

**Welcome**

**NYS Mentoring Update**

**Wallace Foundation Visit Reflection & Kern County Visitors**

**Website Updates & Workgroup Chair Updates**

**Wade Norwood, Common Ground Health - Keynote**

**Rob Lillis & Jay Roscup - EYS Updates**

**Career Carnival Update & Link to ARCH & EYS**

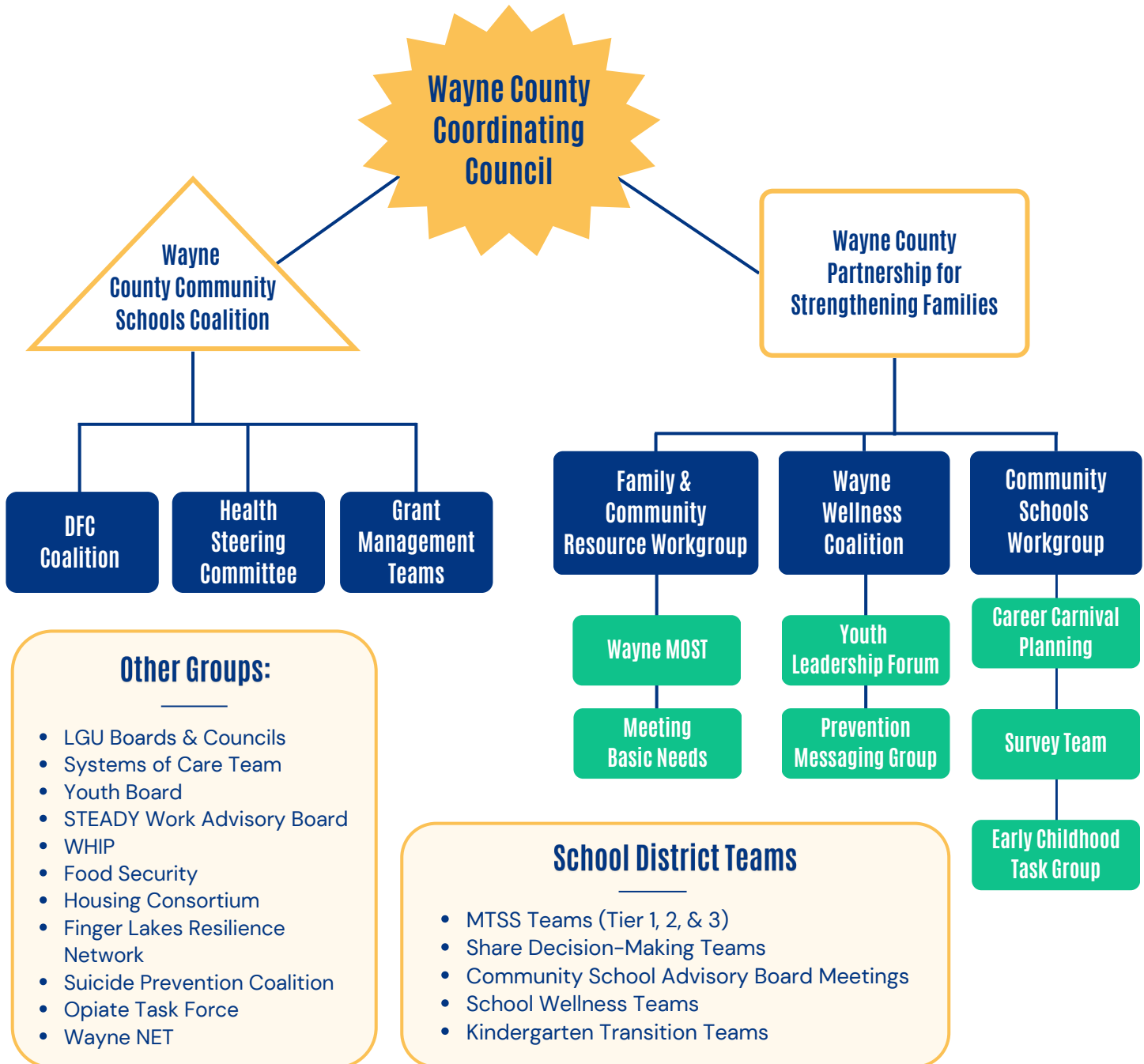
**Girls Night Out & Link to ARCH**

**Break**

**Collaboration ARCH Discussions**

**Closure & Share Out**

# WAYNE COUNTY COLLABORATION & COMMUNICATION FLOW



**Have feedback? Email  
[rhayes@flxcommunityschools.org](mailto:rhayes@flxcommunityschools.org)**

**\*Illustrates Communication Flow, NOT hierarchy**

# REVIEW OF 10TH GRADE RISK FACTOR SCALE SCORES AND ITEMS DRIVING THE POSITIVE CHANGE

## Wayne County 10th Grade

RP Factor	<u>EYS 2019</u>		<u>EYS 2023</u>	
	Proportion at Risk		Proportion at Risk	
<b>Social Skills</b>		15.4%		4.3%

You are at a party at someone's house, and one of your friends offers you a drink containing alcohol. What would you say or do? (Check one)

	Frequency	Percent	Frequency	Percent
1 Positive Resistance Skills	485	67.3%	458	79.5%
2 Lack Resistance Skills	236	32.7%	118	20.5%

RP Factor	<u>EYS 2019</u>		<u>EYS 2023</u>	
	Proportion at Risk		Proportion at Risk	
<b>Lack Rewards for Prosocial Behavior in the Community</b>		26.2%		9.1%

There are lots of adults in my community I could talk to about something important.

	Frequency	Percent	Frequency	Percent
1 NO	199	29.8%	128	23.5%
2 no	246	36.9%	192	35.3%
3 yes	159	23.8%	166	30.5%
4 YES	63	9.4%	58	10.7%

RP Factor	<u>EYS 2019</u>		<u>EYS 2023</u>	
	Proportion at Risk		Proportion at Risk	
<b>Lack Rewards for Prosocial Involvement in School</b>		14.3%		12.3%

My teacher(s) notice(s) when I am doing a good job and lets me know about it.

	Frequency	Percent	Frequency	Percent
1 NO	73	9.1%	45	7.5%
2 no	186	23.3%	161	26.7%
3 yes	428	53.5%	316	52.5%
4 YES	113	14.1%	80	13.3%

The school lets my parents know when I have done something well.

	Frequency	Percent	Frequency	Percent
1 NO	191	23.9%	111	18.5%
2 no	323	40.4%	241	40.2%
3 yes	231	28.9%	204	34.0%
4 YES	55	6.9%	44	7.3%

RP Factor	EYS 2019		EYS 2023	
	Proportion at Risk	7.7%	Proportion at Risk	2.5%

**Friend Use Drugs**

Think of your four best friends (the friends you feel closest to). In the past year (12 months), how many of your best friends have smoked cigarettes?

	Frequency	Percent	Frequency	Percent
0	606	78.5%	532	88.8%
1	68	8.8%	30	5.0%
2	39	5.1%	15	2.5%
3	16	2.1%	6	1.0%
4	43	5.6%	16	2.7%

Think of your four best friends (the friends you feel closest to). In the past year (12 months), how many of your best friends have used marijuana?

	Frequency	Percent	Frequency	Percent
0	416	54.2%	419	69.9%
1	103	13.4%	57	9.5%
2	57	7.4%	40	6.7%
3	43	5.6%	18	3.0%
4	149	19.4%	65	10.9%

Think of your four best friends (the friends you feel closest to). In the past year (12 months), how many of your best friends have used LSD, cocaine, amphetamines or other illegal drugs?

	Frequency	Percent	Frequency	Percent
0	667	87.6%	559	93.6%
1	41	5.4%	17	2.8%
2	14	1.8%	8	1.3%
3	4	0.5%	7	1.2%
4	35	4.6%	6	1.0%

RP Factor	EYS 2019		EYS 2023	
	Proportion at Risk	8.2%	Proportion at Risk	6.5%

**Rewards for Antisocial Involvement**

What are the chances you would be seen as cool if you began drinking alcoholic beverages regularly, that is, at least once or twice a month?

	Frequency	Percent	Frequency	Percent
1 no chance	463	62.4%	454	77.1%
2 little chance	115	15.5%	71	12.1%
3 some chance	95	12.8%	33	5.6%
4 pretty good chance	42	5.7%	17	2.9%
5 very good chance	27	3.6%	14	2.4%

What are the chances you would be seen as cool if you smoked marijuana?:

	Frequency	Percent	Frequency	Percent
1 no chance	360	48.6%	395	67.1%
2 little chance	108	14.6%	75	12.7%
3 some chance	103	13.9%	47	8.0%
4 pretty good chance	83	11.2%	44	7.5%
5 very good chance	87	11.7%	28	4.8%

# REVIEW OF 10TH GRADE RISK FACTOR SCALE SCORES AND ITEMS DRIVING THE NEGATIVE CHANGE

RP Factor	EYS 2019		EYS 2023	
<b>Lack Opportunities for Prosocial Involvement in the Community</b>	<b>Proportion at Risk</b>	<b>14.2%</b>	<b>Proportion at Risk</b>	<b>50.7%</b>
In my community there are enough recreational activities for kids my age.	<b>Frequency</b>	<b>Percent</b>	<b>Frequency</b>	<b>Percent</b>
1 NO	82	12.6%	66	12.4%
2 no	169	26.0%	157	29.5%
3 yes	288	44.3%	243	45.6%
34 YES	111	17.1%	67	12.6%
In my community there are recreational activities that I would like to do but I can't.	<b>Frequency</b>	<b>Percent</b>	<b>Frequency</b>	<b>Percent</b>
1 NO	144	22.2%	93	17.4%
2 no	342	52.8%	250	46.9%
3 yes	128	19.8%	149	28.0%
4 YES	34	5.2%	41	7.7%
RP Factor	EYS 2019		EYS 2023	
<b>Lack Rewards for Prosocial Involvement in Family</b>	<b>Proportion at Risk</b>	<b>6.1%</b>	<b>Proportion at Risk</b>	<b>12.9%</b>
My parents notice when I am doing a good job and let me know about it.	<b>Frequency</b>	<b>Percent</b>	<b>Frequency</b>	<b>Percent</b>
1 Never Almost Never	64	10.5%	60	11.7%
2 Sometimes	173	28.5%	163	31.7%
3 Often	170	28.0%	152	29.5%
4 Always Almost Always	200	32.9%	140	27.2%
How often do your parents, or an adults you live with, tell you they're proud of you for something you've done?	<b>Frequency</b>	<b>Percent</b>	<b>Frequency</b>	<b>Percent</b>
1 Never Almost Never	70	11.9%	71	14.0%
2 Sometimes	163	27.7%	161	31.7%
3 Often	189	32.1%	162	31.9%
4 Always Almost Always	167	28.4%	114	22.4%
RP Factor	EYS 2019		EYS 2023	
<b>Little Commitment to School</b>	<b>Proportion at Risk</b>	<b>9.9%</b>	<b>Proportion at Risk</b>	<b>16.9%</b>
How important do you think the things you are learning in school are going to be for you later in life?	<b>Frequency</b>	<b>Percent</b>	<b>Frequency</b>	<b>Percent</b>
1 Very Important	64	8.1%	39	6.5%
2 Quite Important	155	19.6%	84	14.0%
3 Fairly Important	271	34.2%	195	32.4%
4 Slightly Important	209	26.4%	188	31.2%
5 Not Important	93	11.7%	96	15.9%

RP Factor	EYS 2019		EYS 2023	
	Proportion at Risk		Proportion at Risk	
<b>Little Commitment to School</b>		<b>9.9%</b>		<b>16.9%</b>
Now thinking back over the past year in school, how often did you enjoy being in school	<b>Frequency</b>	<b>Percent</b>	<b>Frequency</b>	<b>Percent</b>
1 Never	92	11.8%	102	17.0%
2 Seldom	167	21.5%	125	20.8%
3 Sometimes	307	39.5%	226	37.6%
4 Often	185	23.8%	129	21.5%
5 Always	26	3.3%	19	3.2%
Now thinking back over the past year in school, how often did you hate being in school:	<b>Frequency</b>	<b>Percent</b>	<b>Frequency</b>	<b>Percent</b>
1 Never	38	4.9%	28	4.7%
2 Seldom	138	17.9%	89	14.8%
3 Sometimes	270	35.1%	189	31.5%
4 Often	231	30.0%	190	31.7%
5 Always	92	12.0%	104	17.3%
Now thinking back over the past year in school, how often did you try to do your best work in school:	<b>Frequency</b>	<b>Percent</b>	<b>Frequency</b>	<b>Percent</b>
1 Never	18	2.3%	15	2.5%
2 Seldom	38	4.9%	23	3.8%
3 Sometimes	154	20.0%	183	30.4%
4 Often	321	41.7%	222	36.9%
5 Always	238	30.9%	158	26.3%
RP Factor	EYS 2019		EYS 2023	
	Proportion at Risk		Proportion at Risk	
<b>Personal Transitions/Mobility</b>		<b>7.3%</b>		<b>12.7%</b>
Have you changed homes in the past year?	<b>Frequency</b>	<b>Percent</b>	<b>Frequency</b>	<b>Percent</b>
Yes	90	13.9%	84	15.6%
No	558	86.1%	454	84.4%
Have you changed schools in the past year? (Different School District)	<b>Frequency</b>	<b>Percent</b>	<b>Frequency</b>	<b>Percent</b>
Yes	43	6.6%	51	9.5%
No	604	93.4%	485	90.5%
RP Factor	EYS 2019		EYS 2023	
	Proportion at Risk		Proportion at Risk	
<b>Family History of Antisocial Behavior</b>		<b>10.3%</b>		<b>21.2%</b>
Has anyone in your family ever had a severe alcohol or drug problem?	<b>Frequency</b>	<b>Percent</b>	<b>Frequency</b>	<b>Percent</b>
1 Yes	206	33.1%	195	37.7%
2 No	416	66.9%	322	62.3%
In the past year how many adults have you known personally who have used marijuana/THC, cocaine, or other drugs?	<b>Frequency</b>	<b>Percent</b>	<b>Frequency</b>	<b>Percent</b>
0 None	399	59.2%	273	50.6%
1 One or Two	167	24.8%	127	23.5%
2 Three or Four	41	6.1%	51	9.4%
3 Four or Five	18	2.7%	24	4.4%
4 More than five	49	7.3%	65	12.0%

# UPCOMING PARTNERSHIP MEETINGS

**January 10th, 2024, 9 AM- 10:30 AM**

Virtual

**March 13th, 2024, 9 AM - 10:30 AM**

Wayne-Fingerlakes BOCES

**May 8th, 2024, 9 AM - 10:30 AM**

Wayne-Fingerlakes BOCES



Join our networking sessions with the West Kern Consortium! Use the QR to RSVP.

## Partner with the United Way on The Human Services Compensation & Benefits Survey

### Purpose

Update benchmarks for the Six-County Human Services Sector in the areas of:

- Compensation & Benefits
- Time-off, Remote/hybrid work accommodations
- Shift-differentials

Email Scott Warburton ([scott.warburton@unitedwayroclx.org](mailto:scott.warburton@unitedwayroclx.org)) to participate. The more participants the better!

